

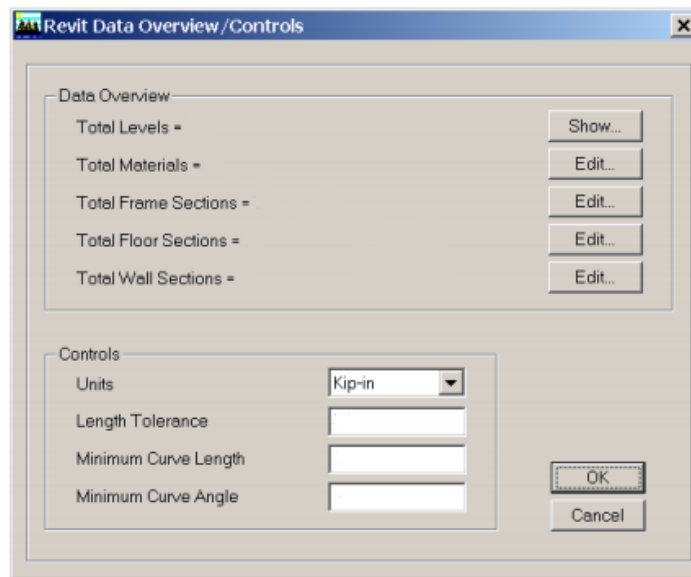
## ***Creating an ETABS Model From Revit Structure***

It is first important to note when exporting from Revit to ETABS, only the analytical model is transferred so it is important that the analytical model does not differ from the solid model.

- First open the Revit model in Revit Structure.
- From the menu select tools > External Tools > Export to create new ETABS model.
- Select "Start." The program will begin calculating all the members modeled in Revit Structure to be sent to ETABS.
- When this process is completed click "OK" and you will be prompted to select the items you would like to send to the ETABS model such as loads, slabs, footings, and grids.



- You will be prompted to create a file name and a Folder to save the exported model to.
- Open ETABS from the computer start menu.
- From the ETABS program select File > import > Revit structure.exr file. Select the file you saved after exporting from Revit in the previous steps.
- A dialogue box will show up with data overview. If any warnings are present it is best to resolve these issues now. Warnings are most likely a result of items not being defined in your Revit model such as material properties. Simply click the edit button next to the warning to proceed with the modifications. Once satisfied with the mapping parameters through these "edit" buttons select "ok"



- Your ETABS model will be created and ready to apply load applications and run an analysis.